

Vartan of Nazareth

By Malcolm Billings

Levantine Foundation,
London, 7 September 2016

The Ottoman Empire at the height of its power





Constantinople view – Golden Horn



Haghia Sophia



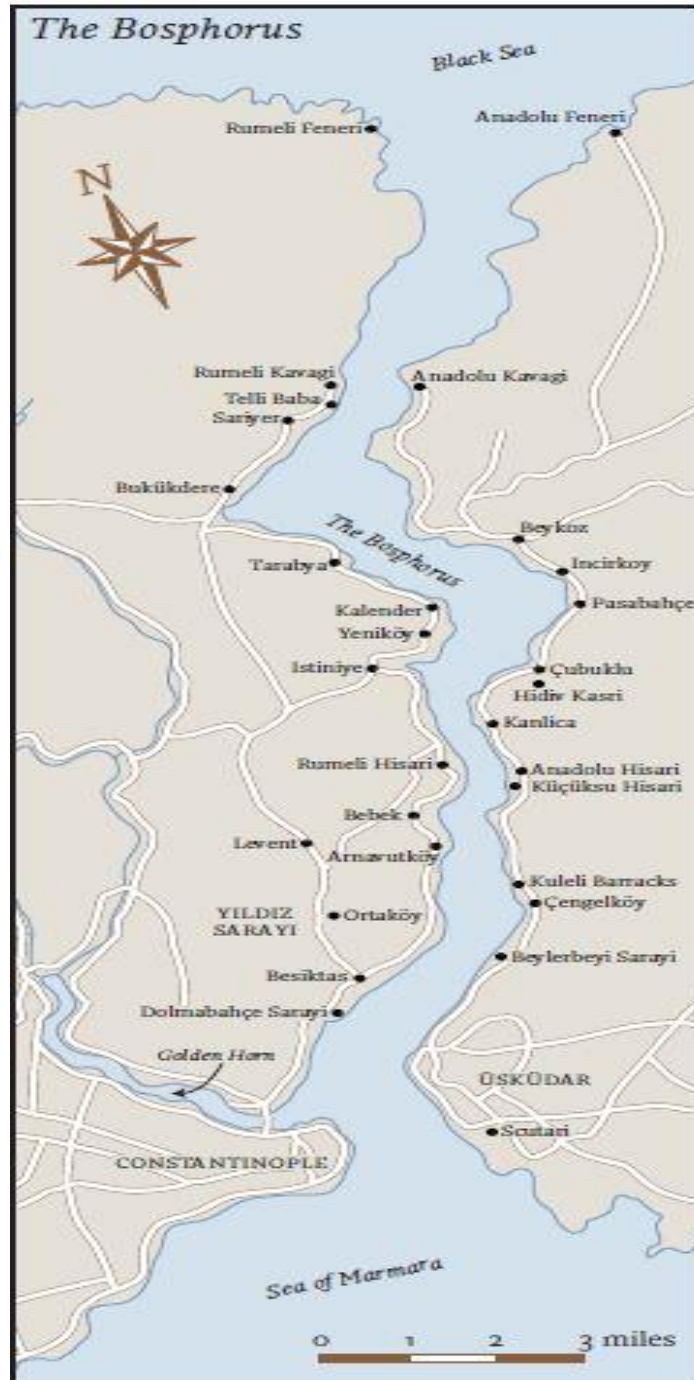
Mehmet II



Dolmache Palace



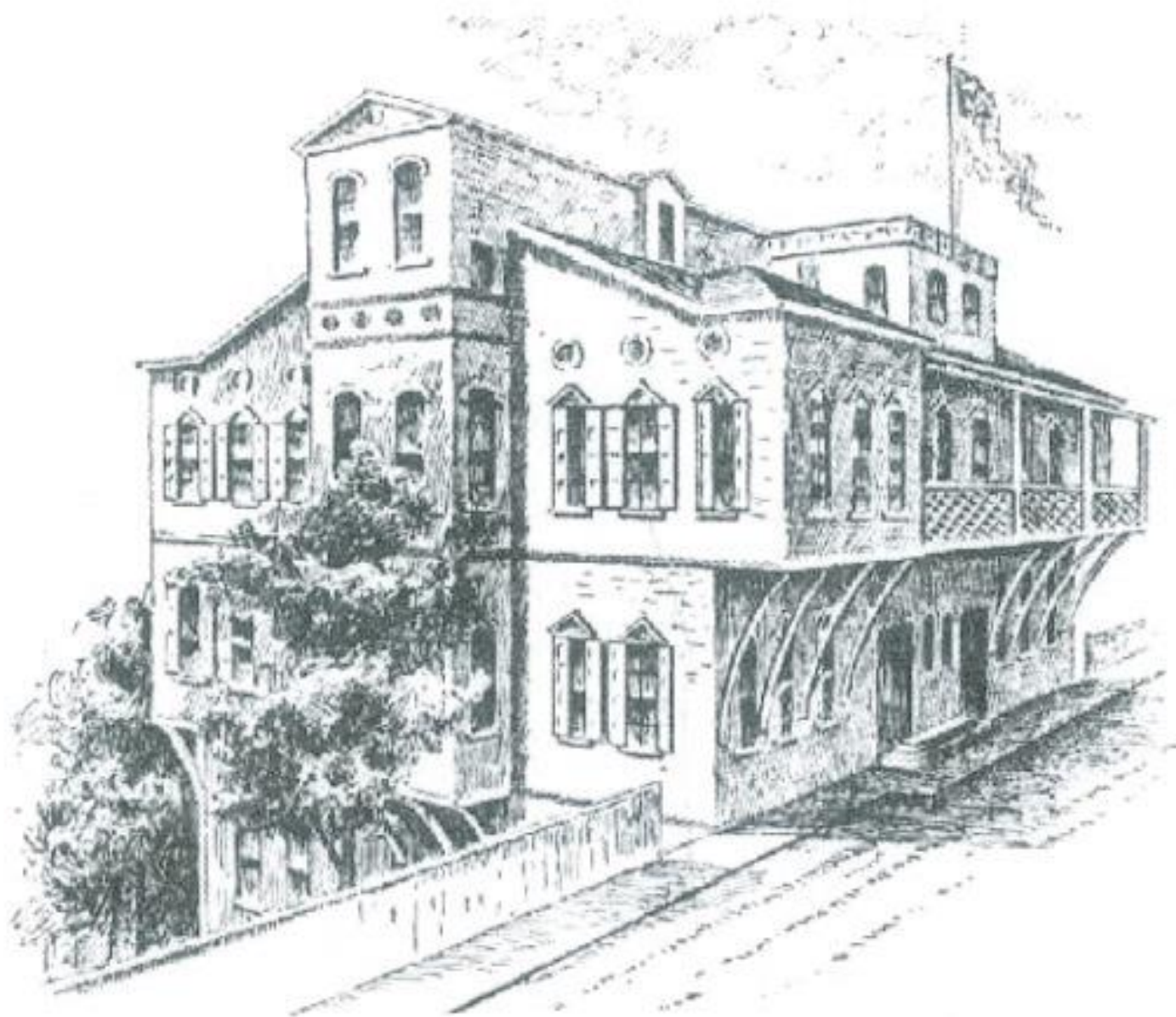
Cyrus Hamlyn



The Bosphorus



Site of Bebek Seminary



Bebek Seminary



Hamlyn's Medicine Chest



Naval ships at anchor



Grenadiers at Scutari



Crimea Battlefields



Charge of Light Brigade



**Old Barrack Hospital
Scutari**



**Florence
Nightingale**



FLORENCE NIGHTINGALE IN THE MILITARY HOSPITAL AT SCUTARI.

Scene. — Night, — when that excellent & benevolent young lady is going her round among the brave wounded & sick soldiers, to see that their wants have been properly administered.



Scutari Cemetery and Memorial

A CARPENTER

Headstone – Scutari Cemetery



DRAWN BY H. MARTENS, FROM THE DESIGNS OF UNIFORMS MADE BY LONDON, MORLAND & LONDON.

The Turkish Contingent.

**Turkish Contingent
Officer's dress**



**Vartan's Campaign
Medal**



View of Edinburgh

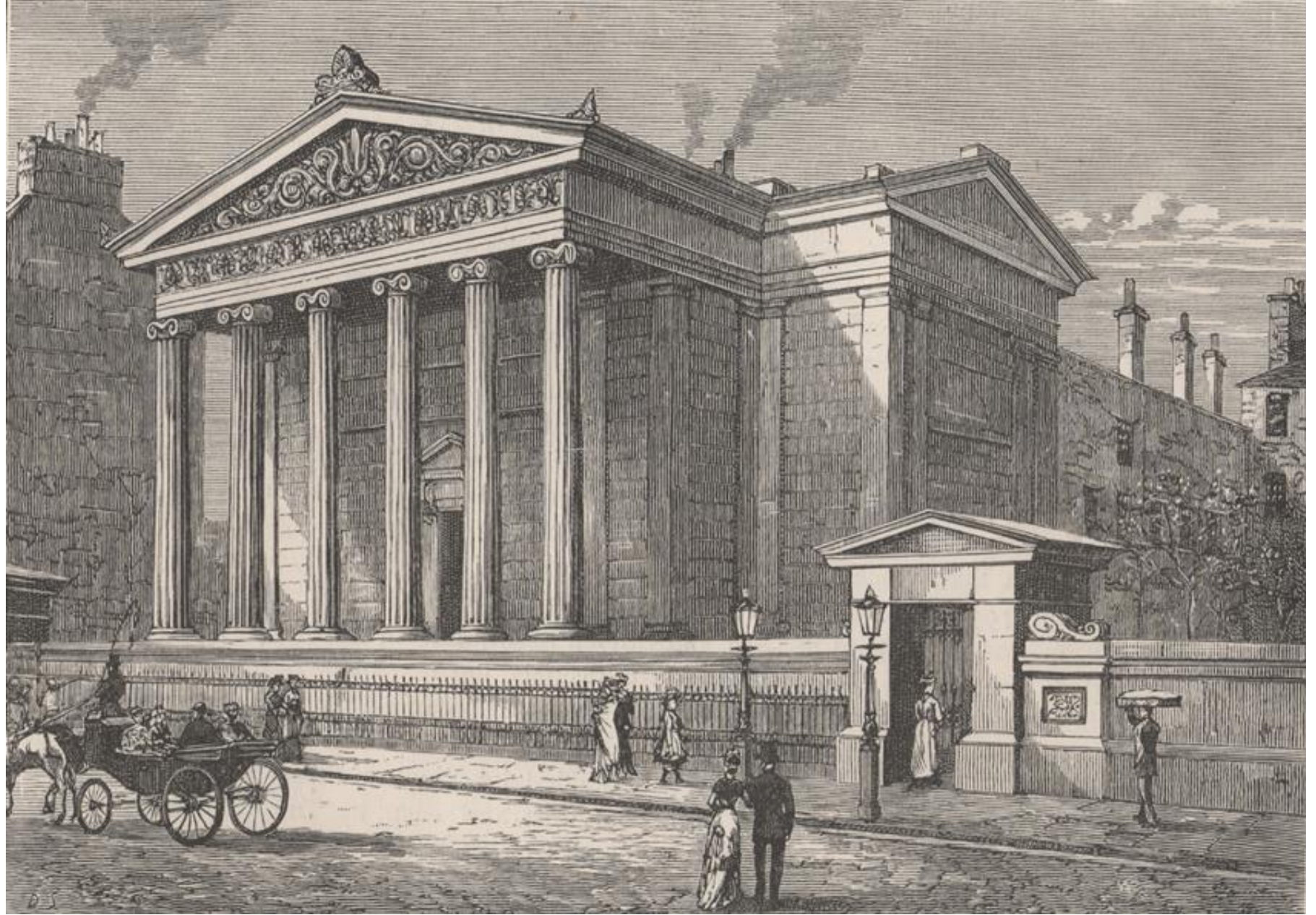


**James Young
Simpson**



Headquarters - EMMS

The Livingstone Memorial Missionary Training Institute and the Magdalen Chapel.



Royal College of Surgeons, Edinburgh



Nazareth circa 1860

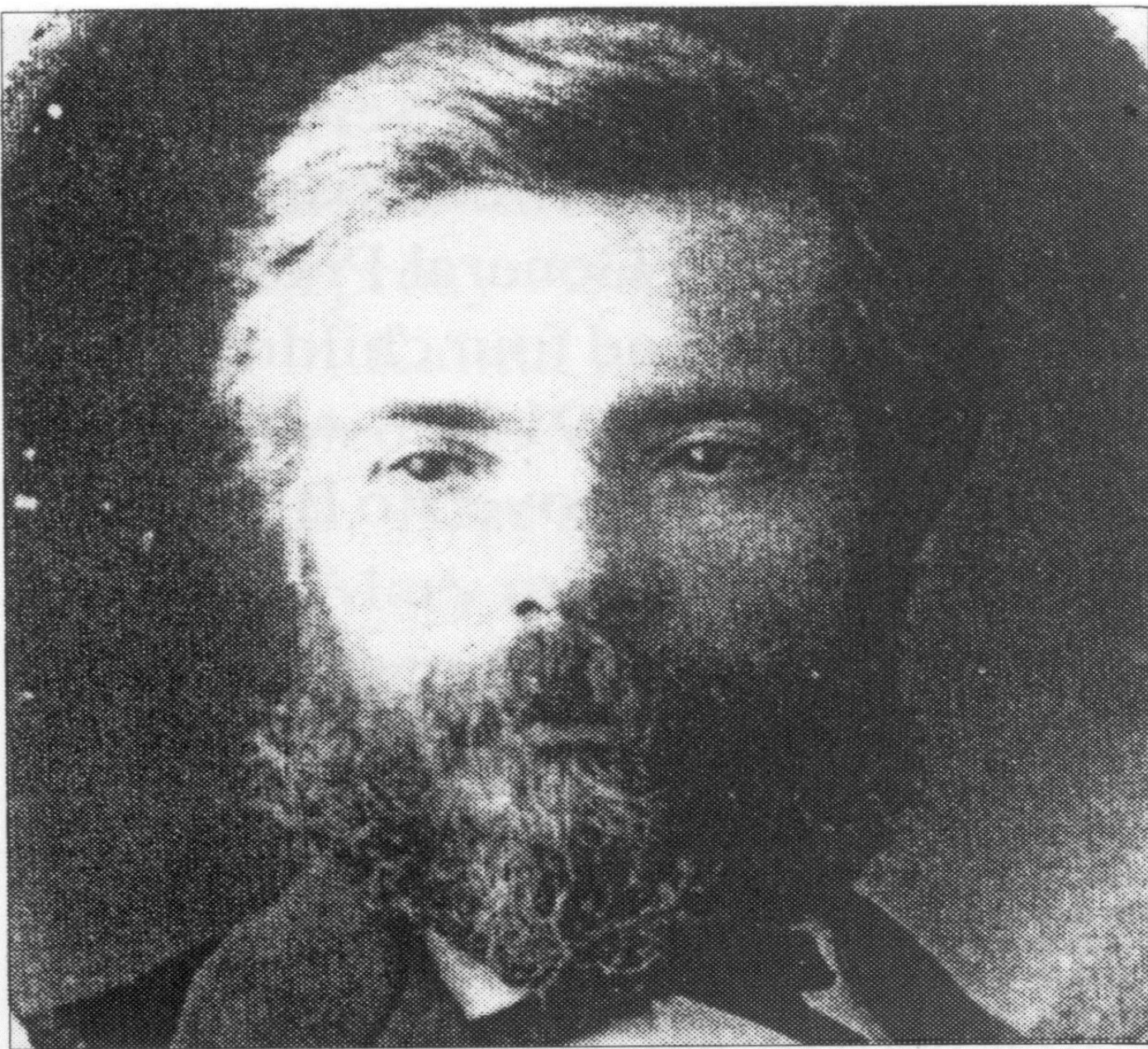


Burns patient

Showing the scars resulting from the native method of
treating disease by extensive burning.

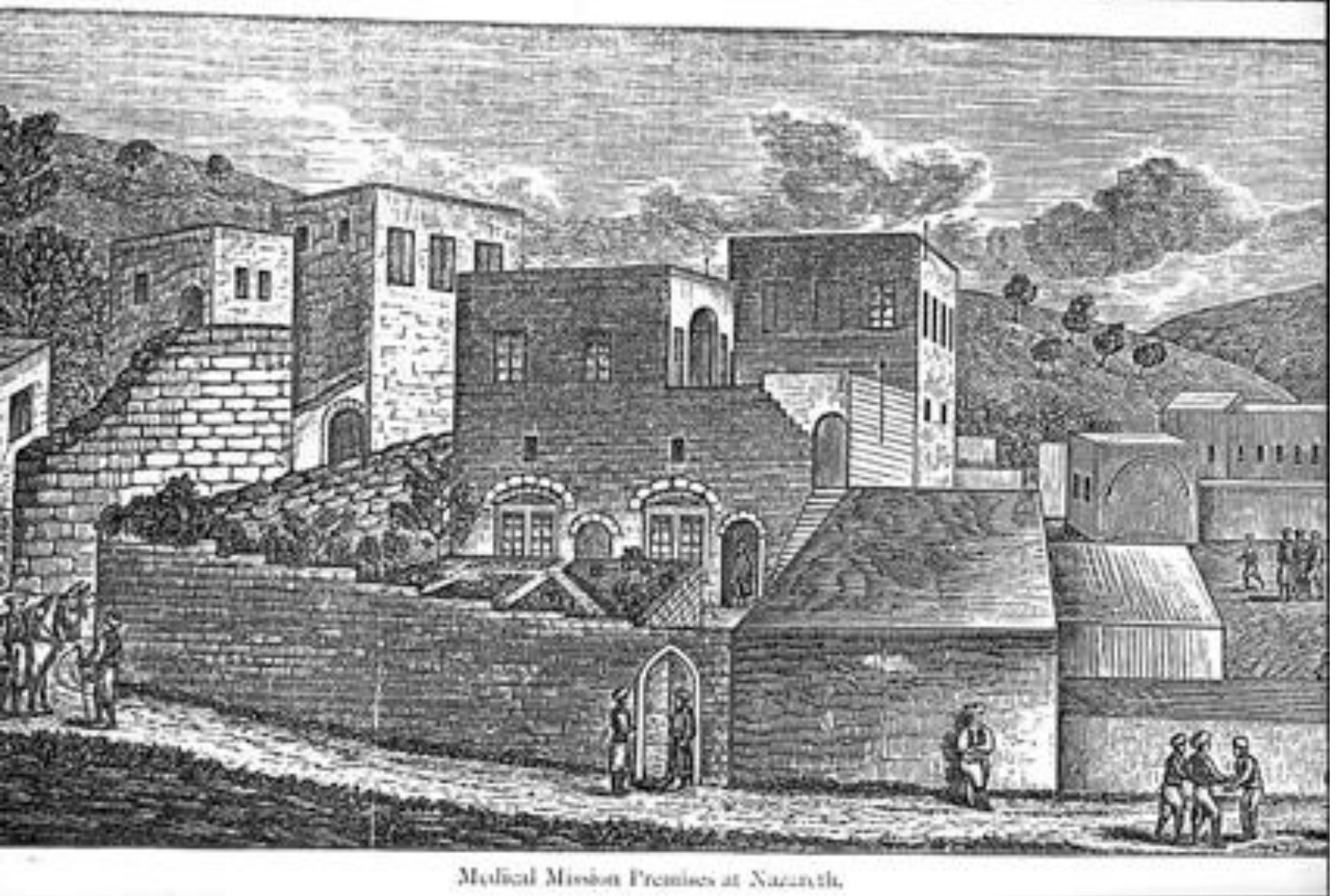


Mary Anne Stewart



**The Young
Vartan**





First Hospital, Nazareth



1882 Doctor's House and New Hospital site



Façade and Window



**Author on stairs,
Doctor's House**



Steel reinforcement



DR. VARTAN AND PATIENTS AT NAZARETH 1893



DR. F. J. SCRIMGEOUR



New Temporary Hospital, 1904



Operating theatre



Hospital staff with Vartan, 1905



Camel ambulance



Vartan Family and Friends

17.5001

Tiberius Hospital

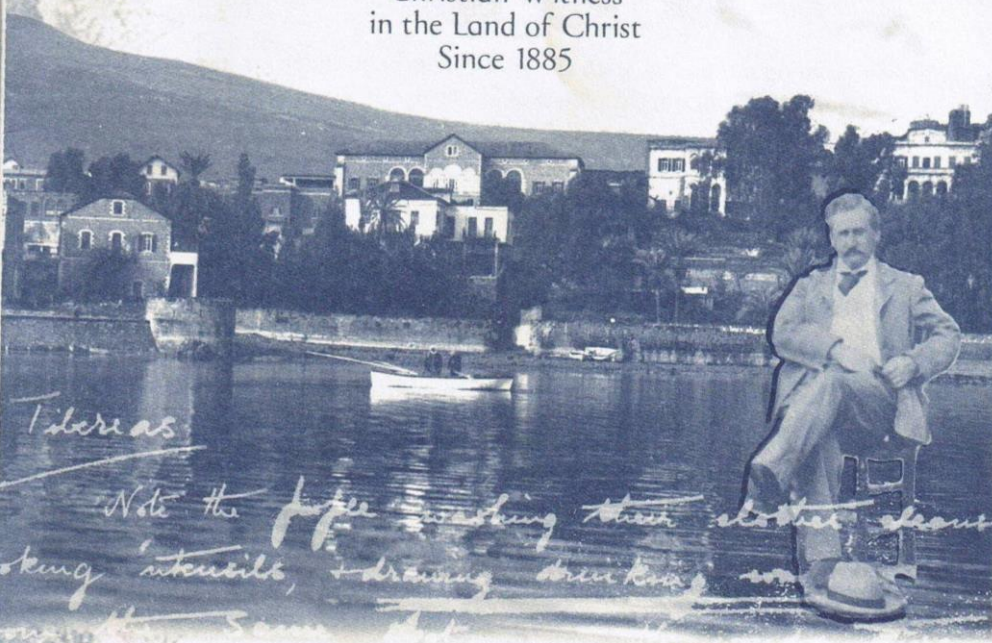


St. Andrew's Galilee

THE SCOTS HOTEL ST. ANDREW'S, GALILEE

Owned and Managed by the
CHURCH OF SCOTLAND

Maintaining
Christian Witness
in the Land of Christ
Since 1885



The Scots Hotel, St. Andrew's, Galilee, P.O.Box 104, Tiberias 14100
Tel.+972-4-6710710, Fax.+972-4-6710711, www.scotshotels.co.il

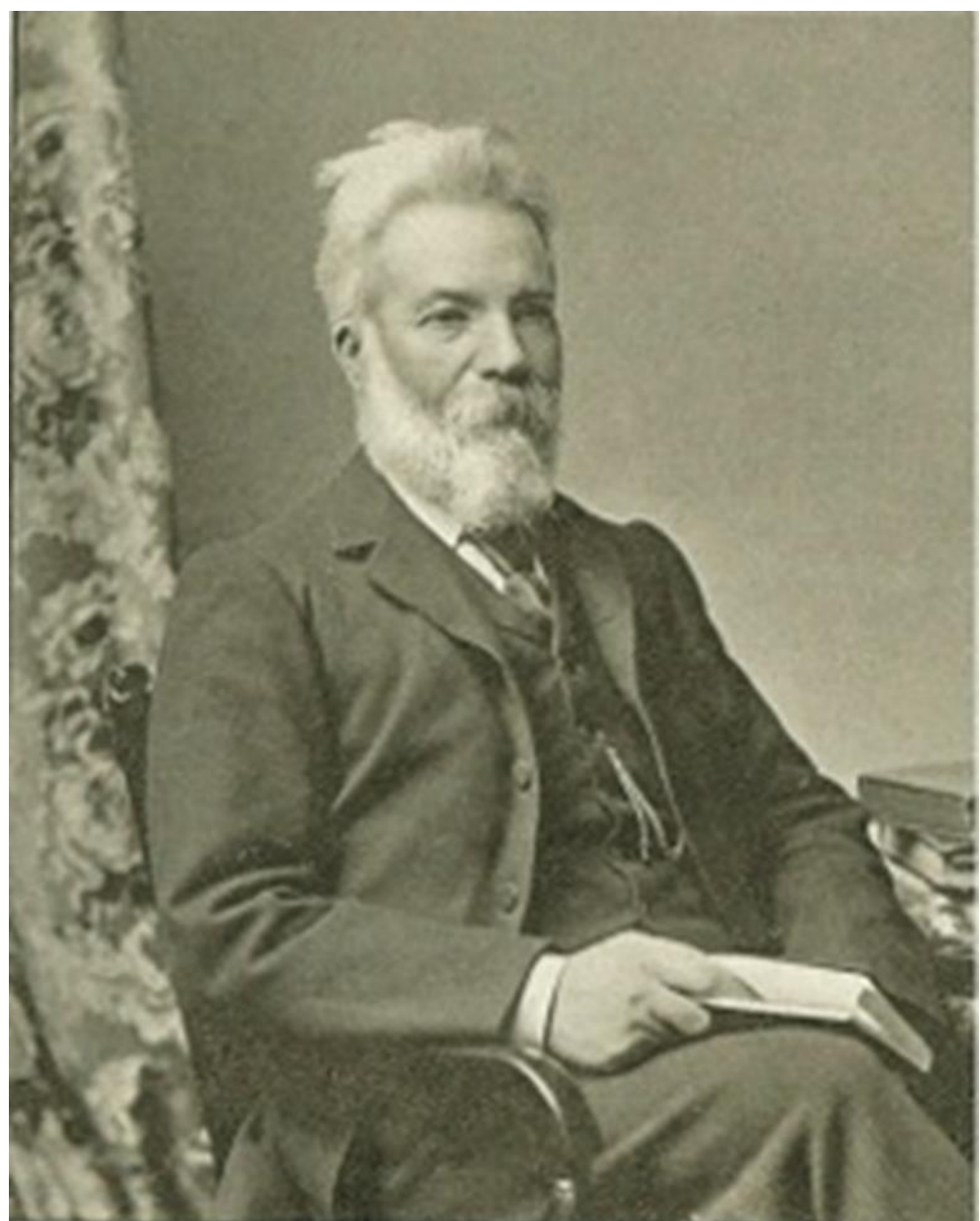
Advertising Leaflet, Tiberius Hospital Buildings



Hospital Buildings today – 5* hotel



**Mary Anne Vartan,
died December 1906**



**Vartan, died
6 December 1908**



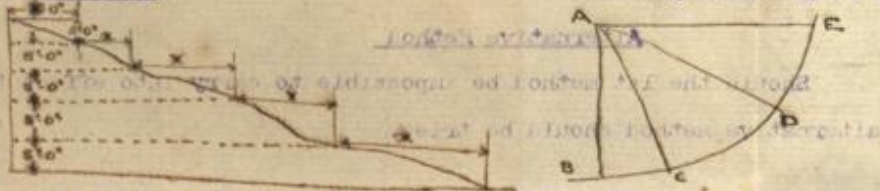
Vartan Family Graveyard – Protestant Cemetery

Architect, Valuator
— and —
Civil Engineer.

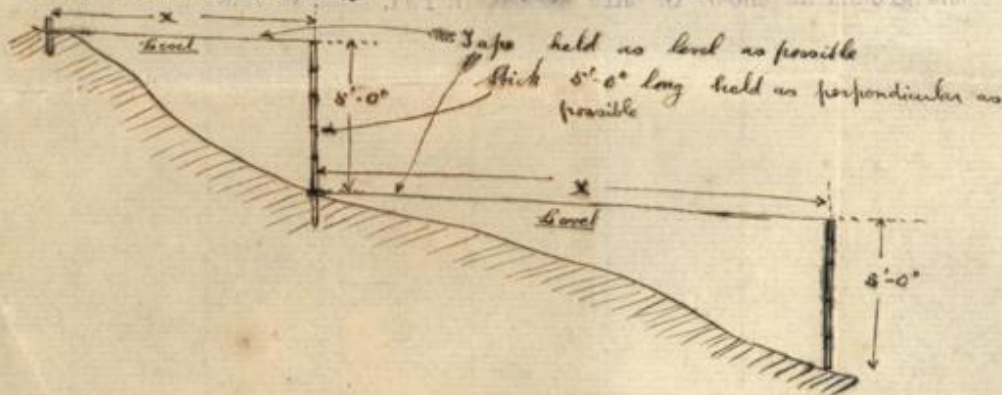
2 India Buildings.

Dundee.

Int. method, for alternative
method see over.



Start to move down line AB say from point A. The contour lines marked on drawing indicate depths of 10ft. supposing hill to be cut into 10ft. slices. Fix a tape at A and holding it horizontal move towards B until there is a distance of 5ft. between end of tape and ground. Make a mark in ground at this point and note the distance x and proceed from the point marked, as before, marking all lengths x so as to enable contour lines to be put in more correctly. This should be done more especially where buildings are to be placed, i.e. on the lines marked. These lines are found by measuring off distances of 50ft. along the lower boundary.

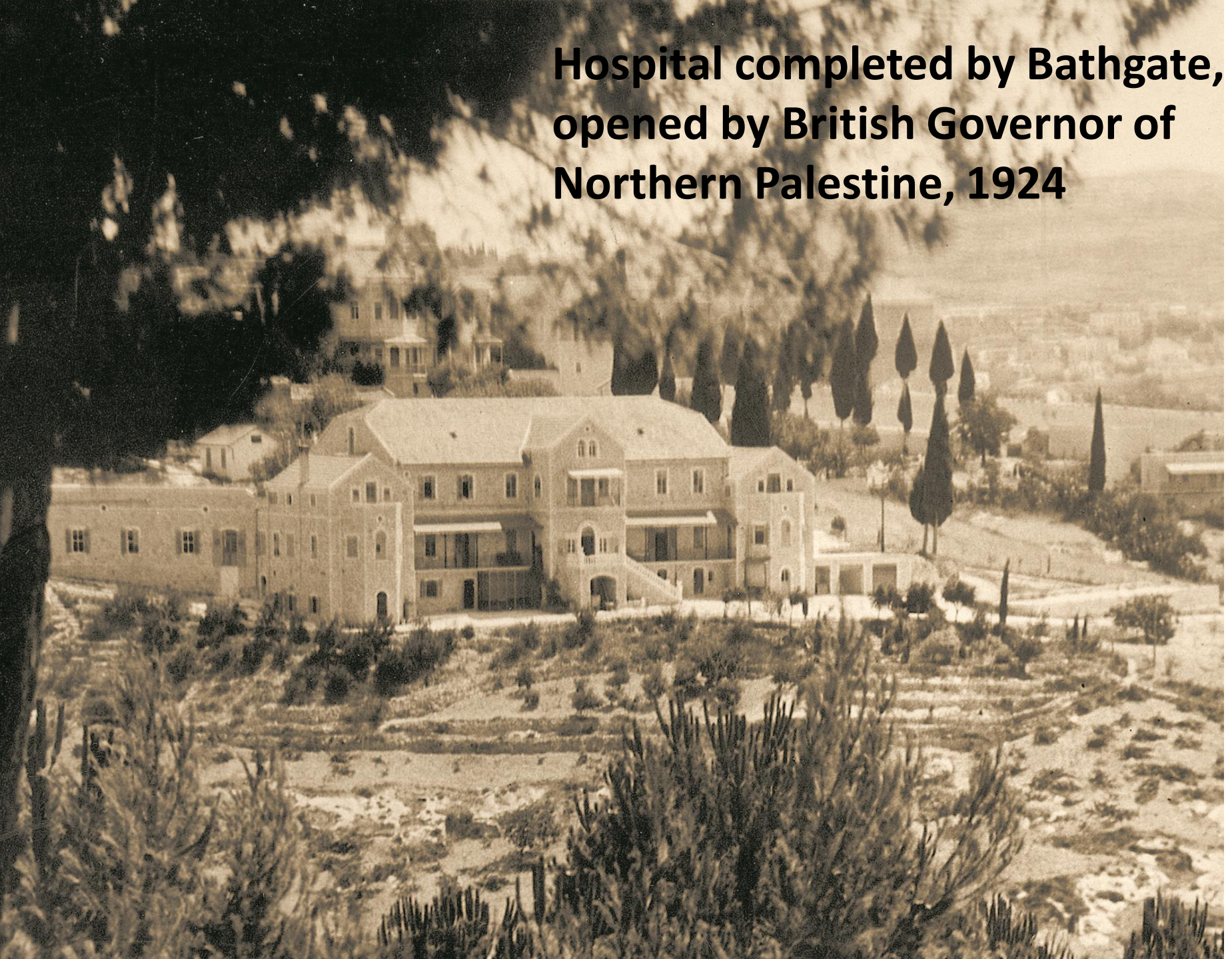


Architect's drawings and instructions, 1904



**New Hospital under construction,
1920**

**Hospital completed by Bathgate,
opened by British Governor of
Northern Palestine, 1924**





**Dr William Bathgate,
Super -Intendent ,
1921-56**



CHILD WELFARE CLINIC.



Hospital and Red Cross Staff



Bathgate's essential olive harvest, 1949



The Bernath Auditorium



Accident and Emergency

